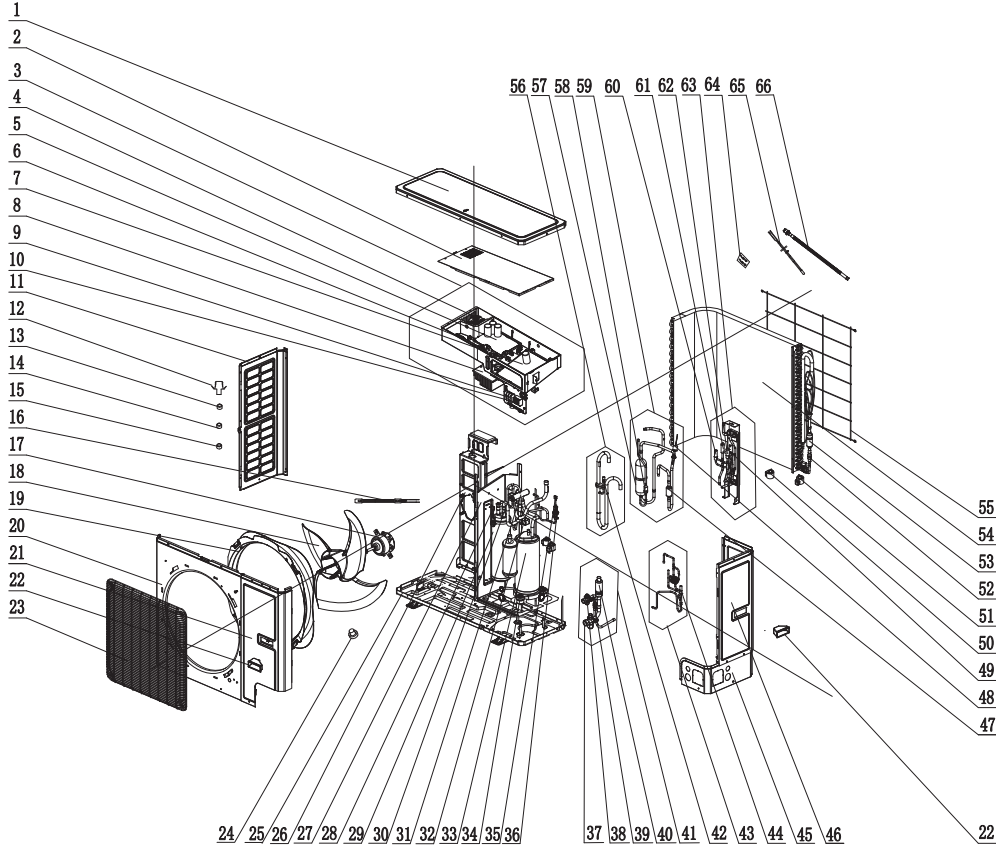


GMV-28WL/C-T(U)



零件号	零件名称	规格	数量	备注
47	Compressor	GR-28	1	
48	Condenser Fan	GR-28	1	
49	Evaporator Fan	GR-28	1	
50	Condenser Fan Motor	GR-28	1	
51	Evaporator Fan Motor	GR-28	1	
52	Condenser Fan Blade	GR-28	1	
53	Evaporator Fan Blade	GR-28	1	
54	Condenser Fan Frame	GR-28	1	
55	Evaporator Fan Frame	GR-28	1	
56	Compressor Mounting Bracket	GR-28	1	
57	Condenser Fan Mounting Bracket	GR-28	1	
58	Evaporator Fan Mounting Bracket	GR-28	1	
59	Compressor Mounting Bolt	GR-28	1	
60	Condenser Fan Mounting Bolt	GR-28	1	
61	Evaporator Fan Mounting Bolt	GR-28	1	
62	Compressor Mounting Nut	GR-28	1	
63	Condenser Fan Mounting Nut	GR-28	1	
64	Evaporator Fan Mounting Nut	GR-28	1	
65	Compressor Mounting Washer	GR-28	1	
66	Condenser Fan Mounting Washer	GR-28	1	

材料	规格	数量	备注
压缩机	GR-28	1	
冷凝器风扇	GR-28	1	
蒸发器风扇	GR-28	1	
冷凝器风扇电机	GR-28	1	
蒸发器风扇电机	GR-28	1	
冷凝器风扇叶片	GR-28	1	
蒸发器风扇叶片	GR-28	1	
冷凝器风扇框架	GR-28	1	
蒸发器风扇框架	GR-28	1	
压缩机安装支架	GR-28	1	
冷凝器风扇安装支架	GR-28	1	
蒸发器风扇安装支架	GR-28	1	
压缩机安装螺栓	GR-28	1	
冷凝器风扇安装螺栓	GR-28	1	
蒸发器风扇安装螺栓	GR-28	1	
压缩机安装螺母	GR-28	1	
冷凝器风扇安装螺母	GR-28	1	
蒸发器风扇安装螺母	GR-28	1	
压缩机安装垫圈	GR-28	1	
冷凝器风扇安装垫圈	GR-28	1	
蒸发器风扇安装垫圈	GR-28	1	





GMV-28WL/C-T(U)

NO.	Part Description	Qty	Part Code
1	Top Cover	1	01264100027P
2	Electric Box Cover	1	012077060106
3	Electric Box Assembly	1	100002062449
4	PFC Inductance	2	N/A
5	Control Board	1	300027060389
6	Filter Board	2	N/A
7	Drive Board	1	300027000570
8	Radiator	1	430034000014
9	Terminal Board	1	422000000015
10	Terminal Board	1	422000060004
11	Left Side Plate	2	01314100043P
12	Drain Connector	1	06123401
13	Compressor OL	3	00183032
14	Compressor OL	1	00183031
15	Compressor OL	3	N/A
16	Crankcase Heater	1	7651873215
17	Brushless DC Motor	1	1570280000401
18	Axial Flow Fan	1	10434100005
19	Diversion Circle	1	10474100003
20	Cabinet	1	000006000006
21	Front Side Plate	1	01314100044P
22	Handle	1	2623525309
23	Front Grille	1	01572800003
24	Drainage Hole Cap	1	06813401
25	Chassis Sub Assembly	1	01700000014801P
26	Motor Support	1	01804100309

GMV-28WL/C-T(U)

NO.	Part Description	Qty	Part Code
27	Clapboard Assembly	1	N/A
28	Sensing Device	1	46020006
29	Gas-liquid Separator	1	07422809
30	Magnet coil/4-way valve	1	4304410018903
31	4 Way Valve	1	4300008201
32	Magnet Coil	1	30296000040
33	Compressor	1	900100019501
34	Compressor Vibration Pad	3	009012000004
35	Sensing Device	1	322101002
36	Nozzle for adding Freon	1	06120014
37	Cut off Valve	1	7334100016
38	Cut off Valve	1	7130209
39	Strainer	1	7212001
40	Bidirectional Strainer	1	07210044
41	Valve Support Assembly	1	01804100306
42	Nozzle for adding Freon	1	06120014
43	Capillary Sub Assembly	1	N/A
44	Electromagnetic valve	1	43000054
45	Right Side Plate	1	0131410004601P
46	Rear Side Plate	1	01314100045P
47	Silencer	1	07444105
48	Pressure Switch	1	322101032
49	Plate type Heat Exchanger	1	030166060062
50	Expansion Valve Coil	1	07334447
51	Expansion Valve Coil	1	07334447
52	Strainer	1	07212121
53	Silencer	1	07444105
54	Condenser Sub Assembly	1	011002060314
55	Rear Grille	1	01574100010
56	Inhalation Tube Sub Assy	1	N/A
57	Oil separator	1	35028000003
58	Strainer	1	07415200002
59	Discharge Tube Assy	1	N/A
60	Discharge Valve	1	07133771
61	Electronic Expansion Valve	1	4304413205
62	Electronic Expansion Valve	1	4304413248
63	Plate type Heat Exchanger	1	00904100017
64	Sensor Sub Assembly	1	39008000060G
65	Electrical Heater Chassis	1	765100049
66	Corrugated Pipe	1	05015408