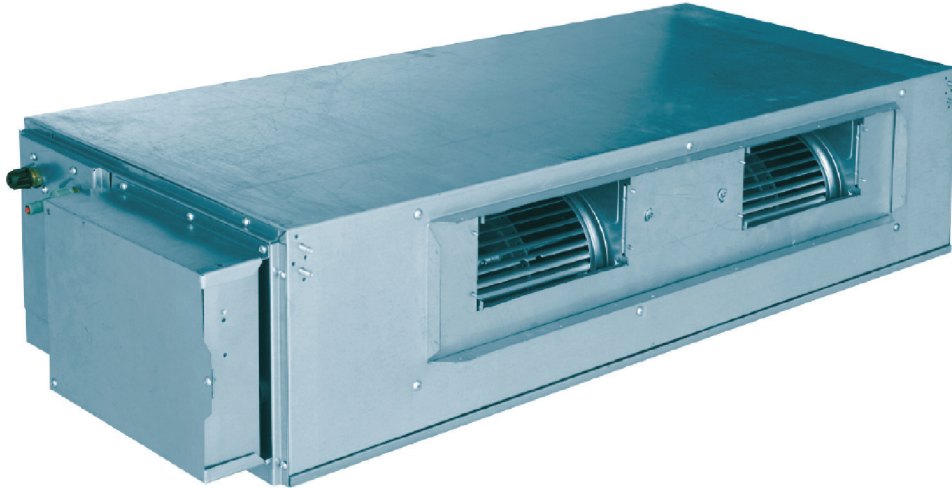


208~230V High ESP Fan Coil

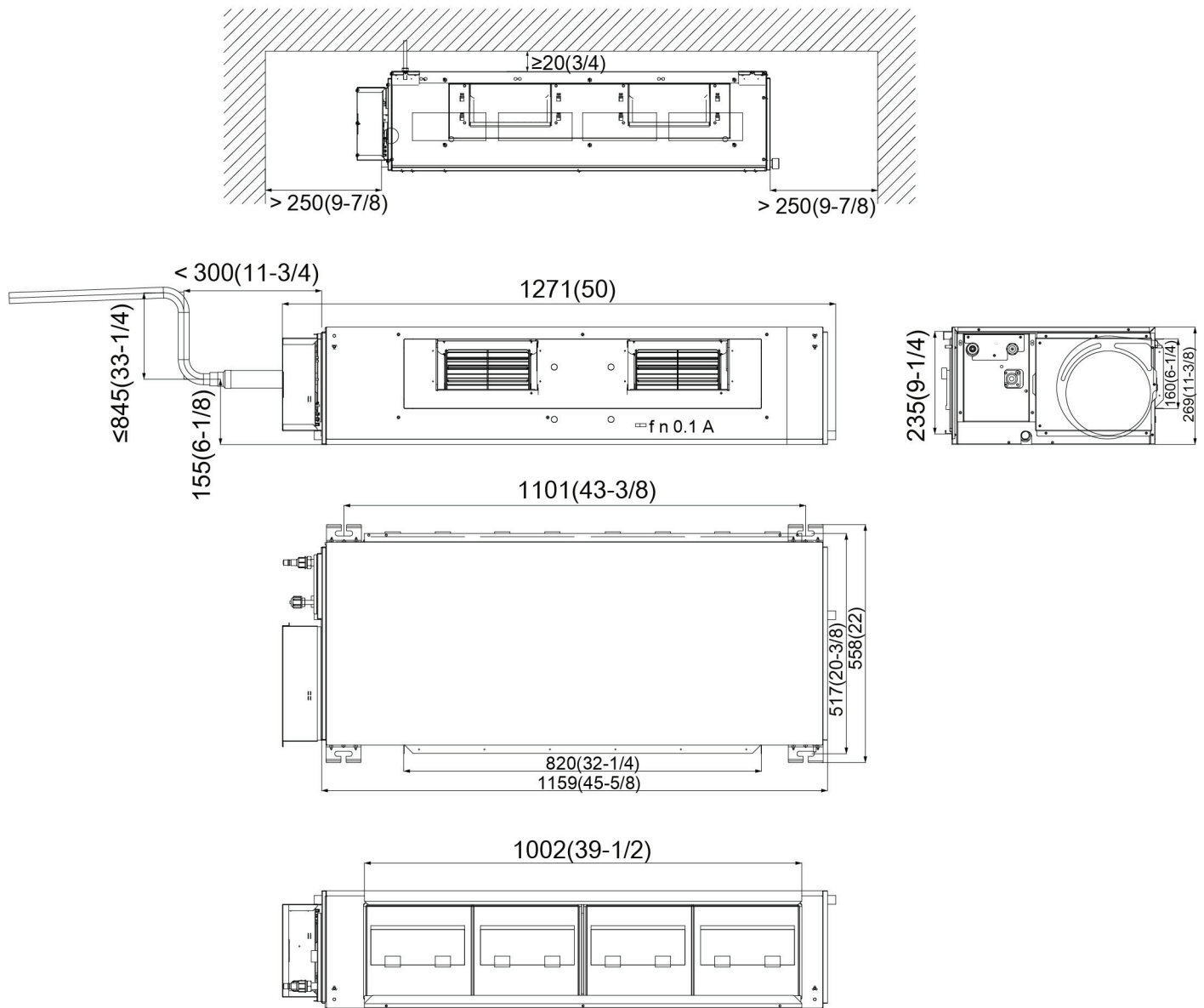
Model:GMV-ND18PHS/A-T(U)



Specifications	Unit	Parameter
Model	—	GMV-ND18PHS/A-T(U)
Performance		
Rated Cooling Capacity	kBtu/h	18
Rated Heating Capacity	kBtu/h	20
Sound Pressure Level	dB(A)	36/40/44
Electrical Data		
Power Supply	Voltage,Phase, Hertz	208/230/1/60
Maximum Overcurrent Protection (MOP)	A	15
Minimum Circuit Amps (MCA)	A	1.2
Fan		
Type × Quantity	—	Centrifugal x2
Air Flow Volume	CFM	355/470/590
ESP	Pa	70/0~100
Fan Motor Running Current	A	0.9
Fan Motor Power Output	W	150
Refrigerant Piping		
Connection Pipe	Gas(mm/inch)	Φ15.9/Φ5/8
	Liquid(mm/inch)	Φ9.52/Φ3/8
Connection method	—	Flare Connection
Refrigerant	—	R410A
Dimension/Weight		
Dimensions (H×W×D)	mm/inch	268×1271×558 (10-1/2×50×22)
Net Weight	kg/lbs	35/77
Other		
Safety Certification	—	ETL

Job Name:		Date:	
System Reference No.:			
Engineer Signature:			

Outline and Physical Dimensions of GMV-ND18PHS/A-T(U).



Unit:mm(in.)

