

208~230V Low ESP Fan Coil

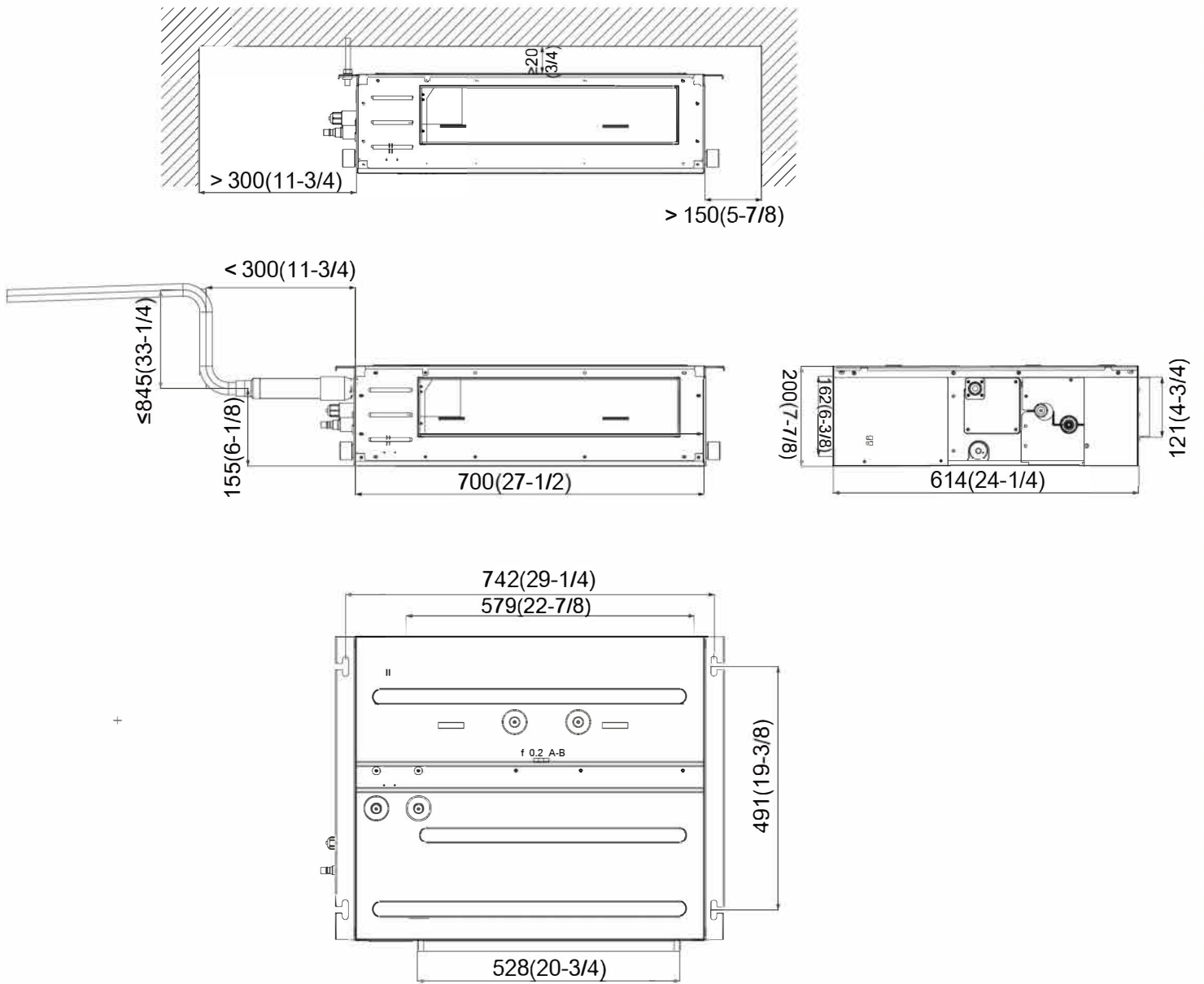
Model:GMV-ND12PLS/A-T(U)



Specifications	Unit	Parameter
Model	—	GMV-ND12PLS/A-T(U)
Performance		
Rated Cooling Capacity	kBtu/h	12
Rated Heating Capacity	kBtu/h	13.5
Sound Pressure Level	dB(A)	27/30/32
Electrical Data		
Power Supply	Voltage,Phase, Hertz	208/230,1,60
Maximum Overcurrent Protection (MOP)	A	15
Minimum Circuit Amps (MCA)	A	1
Fan		
Type × Quantity	—	Centrifugal x2
Air Flow Volume	CFM	206/265/324
ESP	Pa	15/0~30
Fan Motor Running Current	A	0.3
Fan Motor Power Output	W	60
Refrigerant Piping		
Connection Pipe	Gas(mm/inch)	Φ12.7/Φ1/2
	Liquid(mm/inch)	Φ6.35/Φ1/4
Connection method	—	Flare Connection
Refrigerant	—	R410A
Dimension/Weight		
Dimensions (H×W×D)	mm/inch	200×700×615/ (7-7/8×27-9/16×24-3/16)
Net Weight	kg/lbs	23/51
Other		
Safety Certification	—	ETL

Job Name:		Date:	
System Reference No.:			
Engineer Signature:			

Outline and Physical Dimensions of GMV-ND12PLS/A-T(U).



Unit:mm(in.)

