

# Super High Fan Coil 208~230V



Job Name: \_\_\_\_\_ Date: \_\_\_\_\_

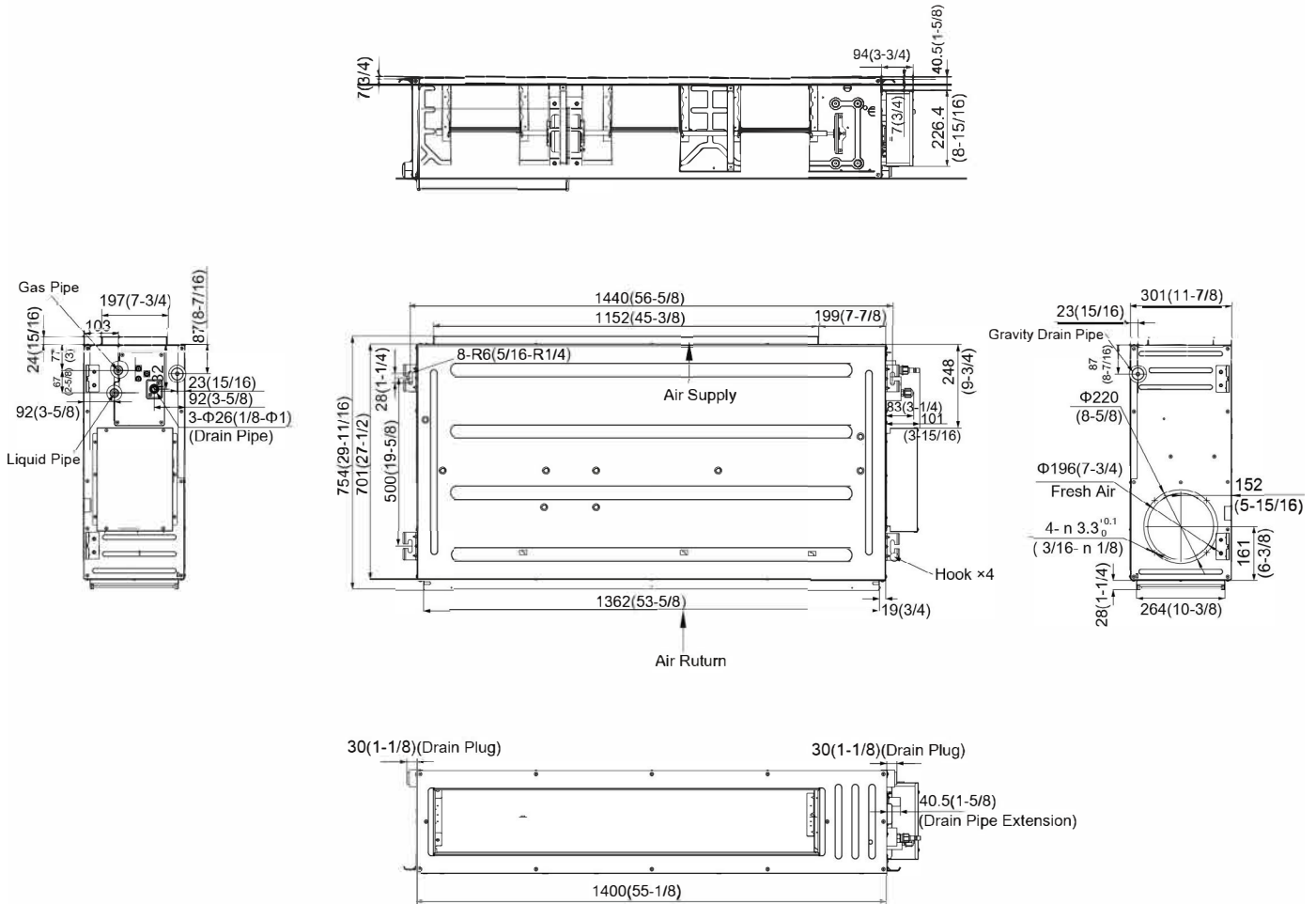
System Reference No.: \_\_\_\_\_ Engineer Signature: \_\_\_\_\_

## Model: GMV-ND30PHS/B-T(U)



Specifications	Unit	Parameter
<b>Performance</b>		GMV-ND30PHS/B-T(U)
Rated Cooling Capacity	kBtu/h	30.0
Rated Heating Capacity	kBtu/h	34.0
Sound Pressure Level (H/M/L)	dB(A)	44/41/38
<b>Electrical Data</b>		
Power supply	Voltage, Phase, Hertz	208/230, 1, 60
Minimum Circuit Amps (MCA)	A	1.7
Maximum Overcurrent Protection (MOP)	A	15
Fuse	A	15
<b>Fan</b>		
Type x Quantity		Centrifugal x 3
Air Flow Volume (H/M/L)	CFM	1059/853/736
ESP	in.W.G.	0~0.8
Fan Motor Running Current	A	1.2
Fan Motor Power Input	W	350
<b>Refrigerant Piping</b>		
Connection Pipe	Gas (inch)	5/8
	Liquid (inch)	3/8
Connection Method		Brazing Connection
Refrigerant		R410A
<b>Dimension/Weight</b>		
Dimensions (WxDxH)	inch	55-1/8 x 27-9/16 x 11-13/16
Net Weight	lbs	121
<b>Other</b>		
Safety Certification		ETL

# Outline and Physical Dimensions of GMV-ND30PHS/B-T(U).



Unit:mm(in.)

